



# MINERVA

## PE0407 Converter Card

---

### Performance & Burn In Test Rev. 1. 0

#### Table of Contents

---

---

#### 1. Overview

#### 2. Performance Measurement Tools and Results

2.1 Test Platform

2.2 Test target and use PU3401F Adapter+M.2 NVMe SSD

2.3 Install Hardware

2.4 BIOS & Windows 10 OS environment setup

2.5 CrystalDiskMark 5.2.1 x64 performance test

2.6 AS SSD Benchmark 1.9 performance test

2.7 ATTO Disk Benchamrk 2.47 performance test

2.8 AnvilBenchmark\_V110\_B337 Benchmark performance test

#### 3. Burn In Tests and Results

3.1 BurnInTest v8.1 Pro burn in test

#### 4. Summary

# PE0407 Converter Card

---

## 1. Overview

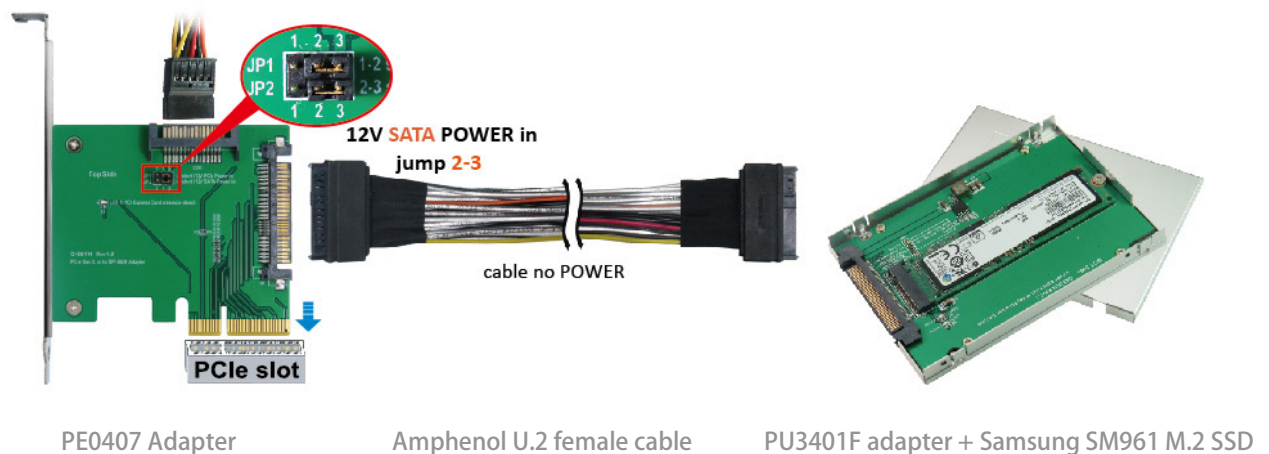
PE0407 adapter, providing SFF-8639 connector can be PU3401F adapter+M.2 NVMe SSD converted into PCI-e Gen 3 / 4 Lanes interface with SATA power connector.

## 2. Tools and Results of Performance Measurement

### 2.1 Test Platform

M/B : GIGABYTE **Z170X UD5 TH**  
CPU : Intel **i5-6500**, 3.2GHz/ 6M Cache/ LGA1150  
Memory : Kingston **KVR21N15D8/8**, **DDR4-2133MHz**, **16GB**(8GB DIMM\*2)  
ATX Power : COOLER MASTER G750M, **750W ATX**, 12V V2.2 Power Supply  
Graphic : Z170 Chipsets built-in **HD Graphics 530**  
CABLE: Amphenol U.2(SFF-8639) **Female** to U.2(SFF-8639) **Female** Cable  
OS : Microsoft **Windows 10 64bit OS**

### 2.2 Test target: PE0407 adapter & Samsung SM961 512GB NVMe SSD



### 2.3 Install Hardware

Insert PE0407 adapter into **PCI-e slot of Z170X UD5 TH**, and then uses cable to connect Samsung SM961 **512GB** NVMe SSD.

### 2.4 BIOS & Windows 10 OS environment setup

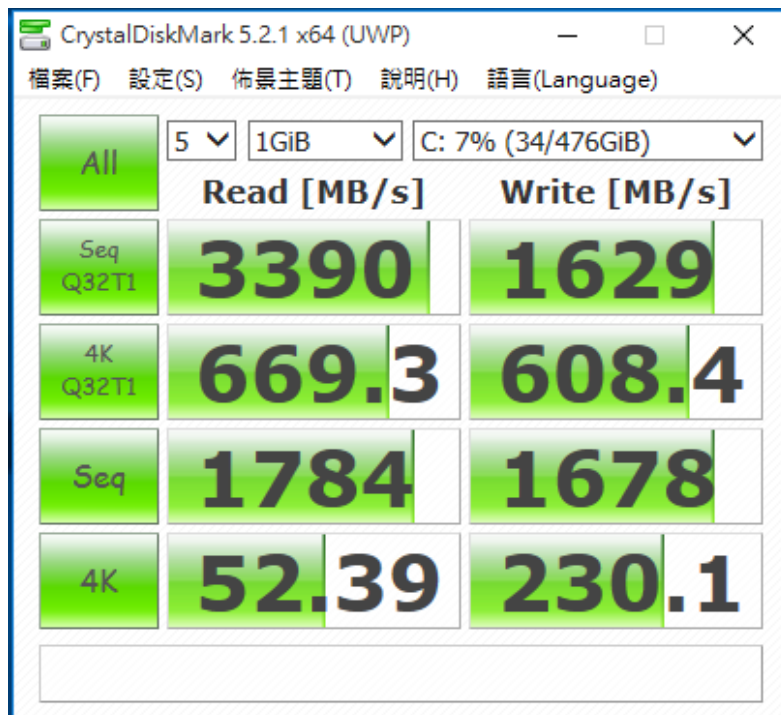
2.4.1 Install Windows 10 64bit OS into Samsung SM961 **512GB** NVMe SSD.

# PE0407 Converter Card

## 2.5 CrystalDiskMark 5.2.1 x64 performance test

※Benchmark (Sequential **Read & Write** / default = **1MB**)

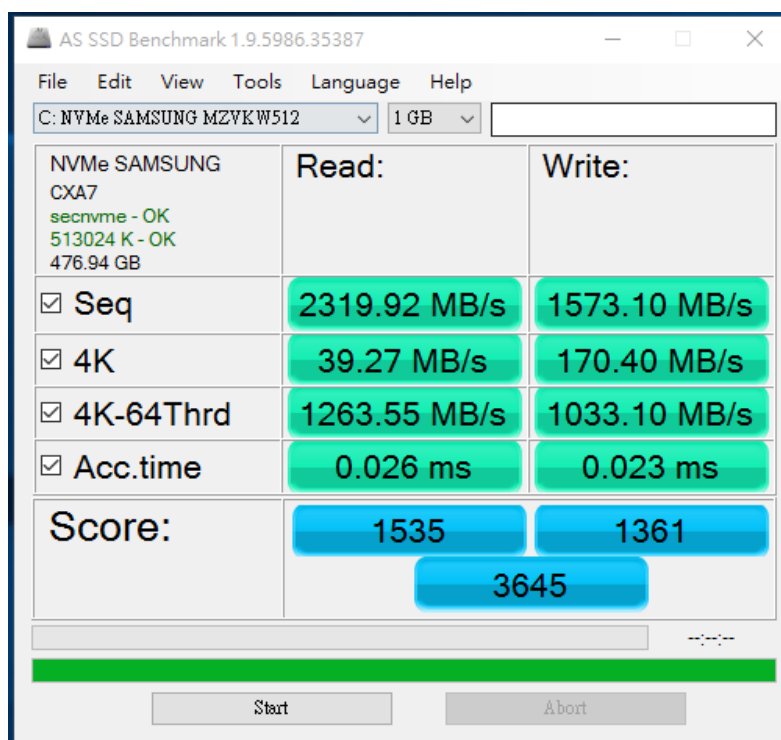
2.5.1 Show [Samsung SM961 512GB NVMe SSD](#) performance as below:



## 2.6 AS SSD Benchmark 1.9 performance test

※Benchmark (**Read & Write** by MB/s, default block size = **16MB**)

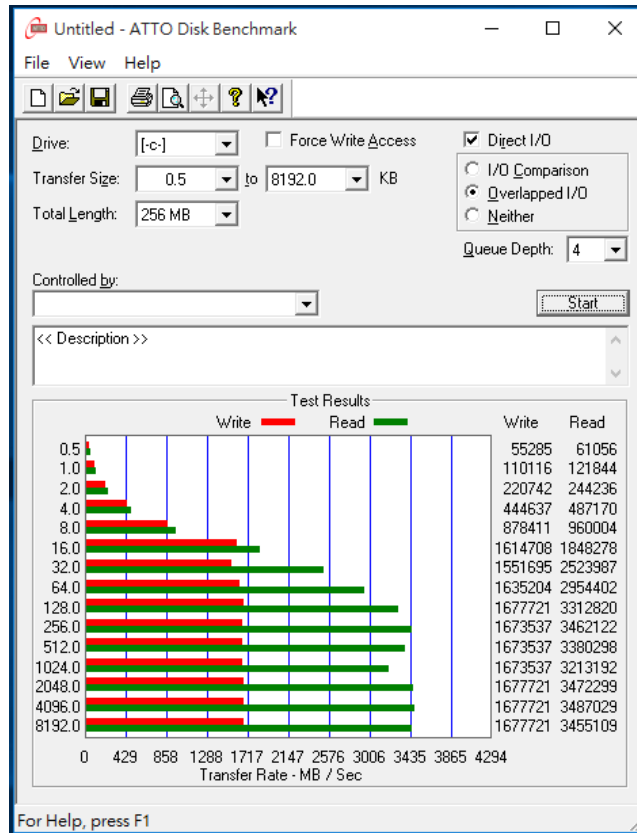
2.6.1 Show [Samsung SM961 512GB NVMe SSD](#) performance as below:



# PE0407 Converter Card

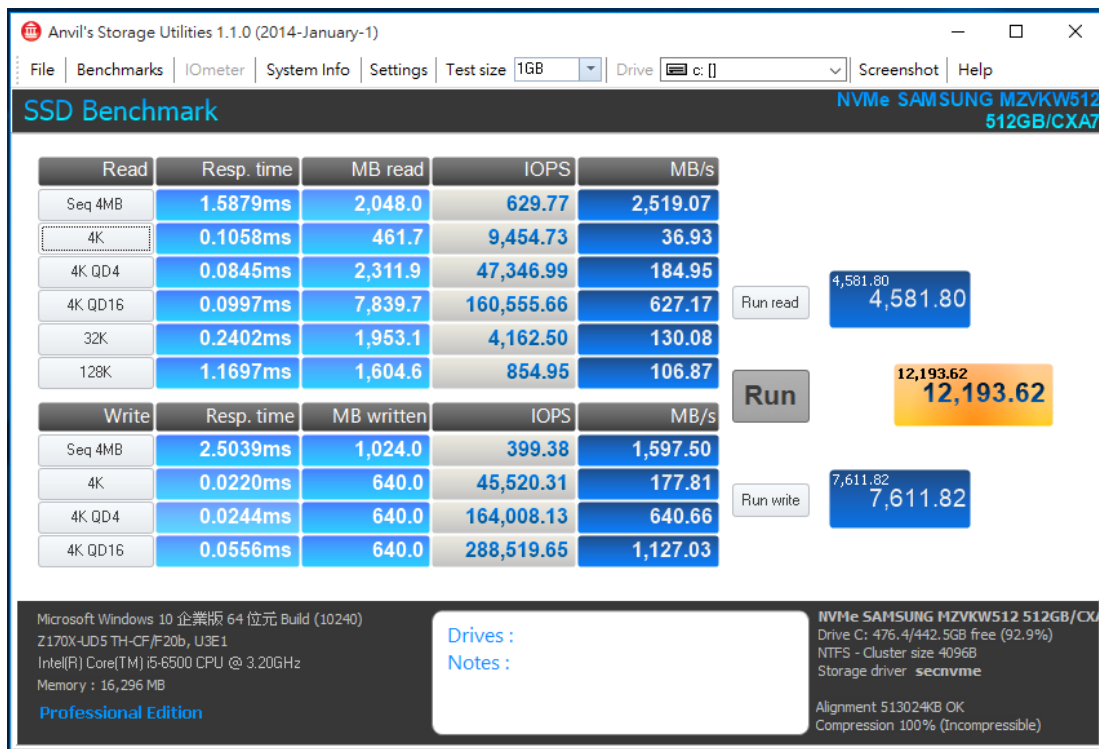
## 2.7 ATTO Disk Benchmark 2.47 performance test

2.7.1 Show [Samsung SM961 512GB NVMe SSD](#) performance as below:



## 2.8 AnvilBenchmark\_V110\_B337

2.8.1 Show [Samsung SM961 512GB NVMe SSD](#) performance as below:

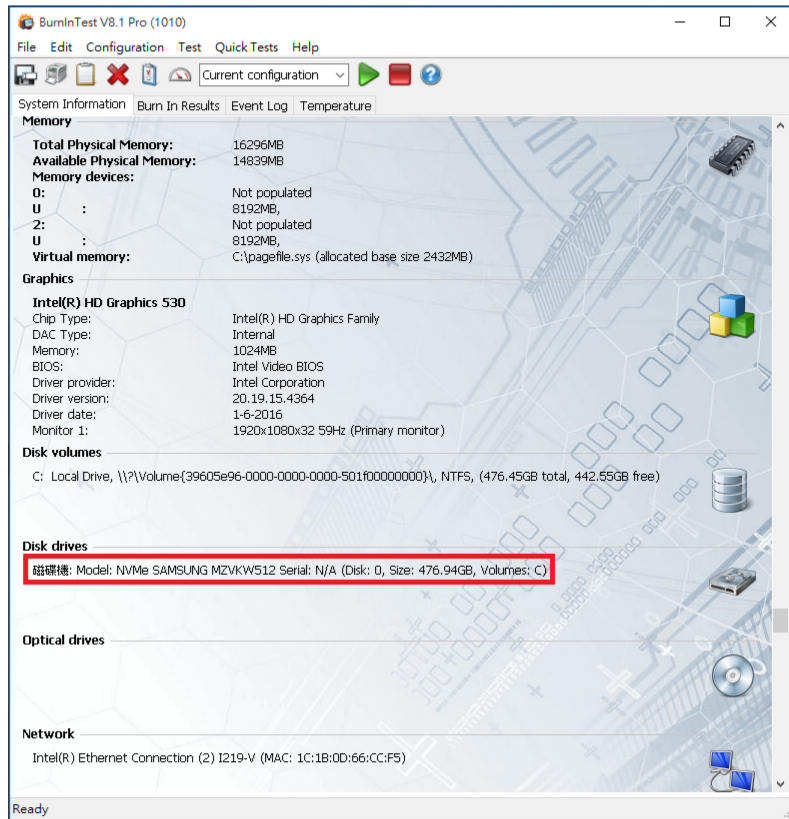
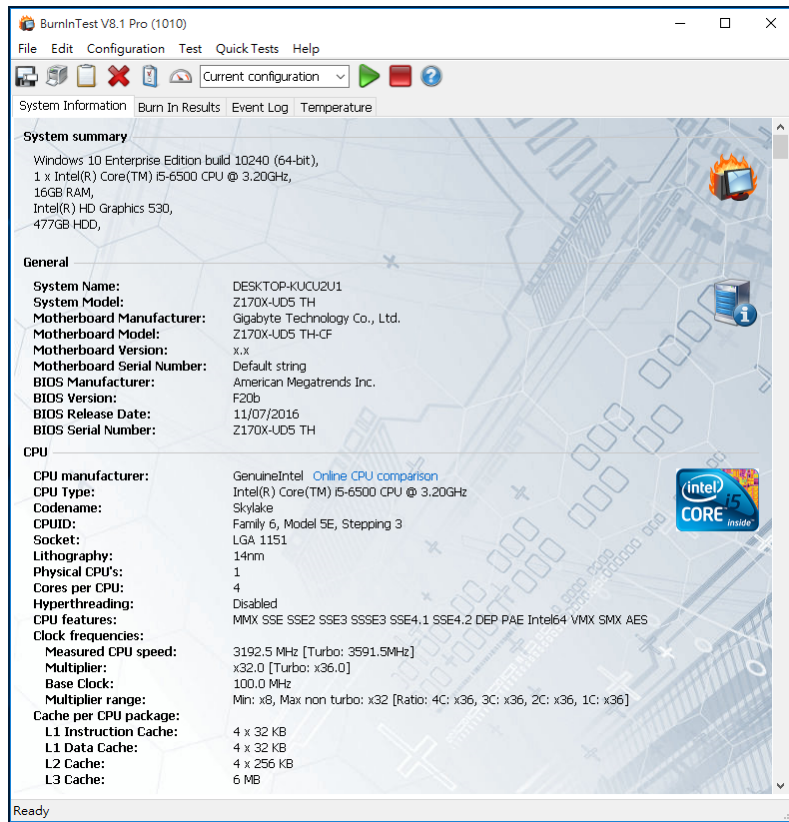


# PE0407 Converter Card

## 3. Burn In Tests and Results

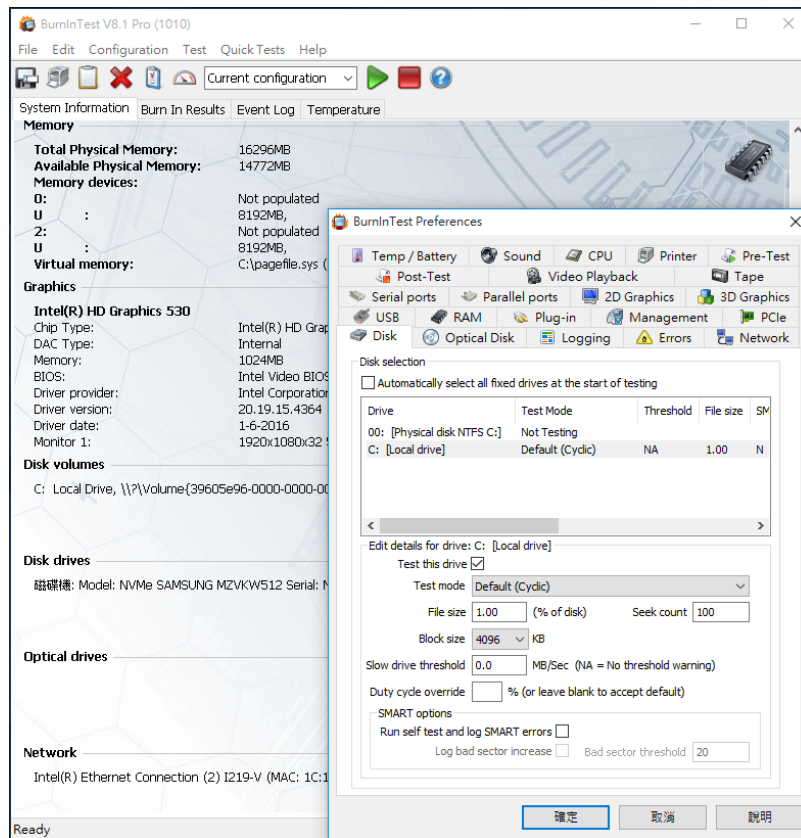
### 3.1 BurnInTest v8.1 Pro for [Samsung SM961 512GB NVMe SSD](#) SSD

#### 3.1.1 system information as below:

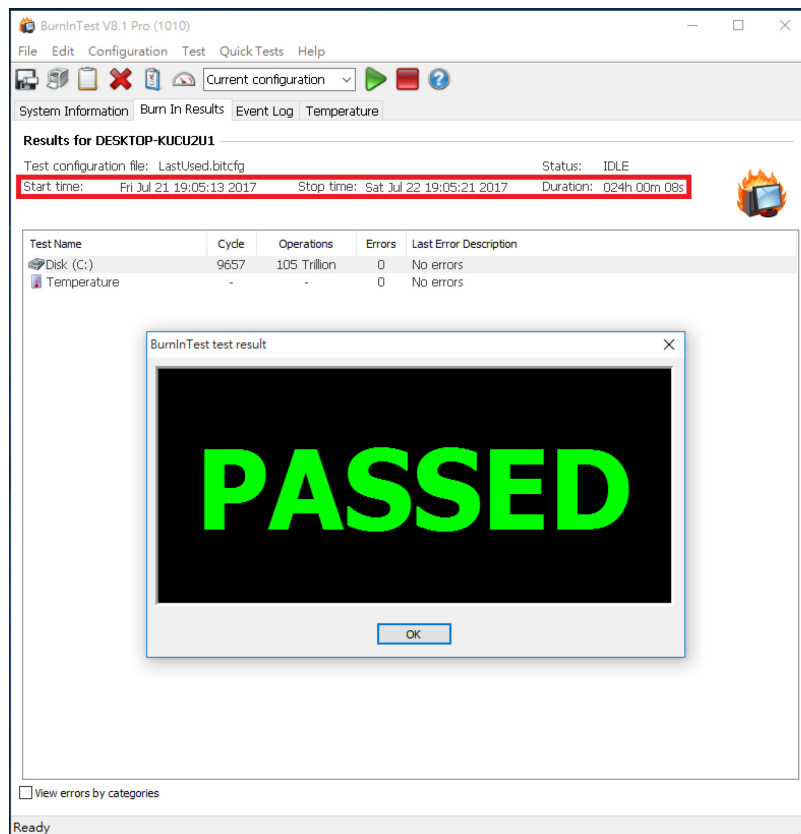


# PE0407 Converter Card

## 3.1.2 show Disk test mode (10 ways cycle test)



## 3.1.3 show 24-hour Burn-in test PASSED



# PE0407 Converter Card

---

## 4. Summary

- 4.1 M.2 SSD is PCI-e Gen 3 / 4 Lanes Interface, I/O speed, max. to 4GB.
- 4.2 PE0407 adapter I/O performance is based on M.2 NVMe PCI-e Gen 3 / 4 Lanes SSD.